



## **Department of Human Services**

### **Office of Medical Assistance Programs**

## **Request for Information**

### **MMIS 2020 Platform Project:**

- Lot 1- Program Integrity Management Systems (“PIMS”) Module
- Lot 2- Third Party Liability (“TPL”) Module

## **Draft Technical Submittal Requirements**

**Date: January 31, 2020**

## Table of Contents

<b>PART 1. GENERAL INFORMATION.....</b>	<b>3</b>
<b>1.1 Purpose of this Request for Information .....</b>	<b>3</b>
<b>1.2 Request for Information Timeline .....</b>	<b>3</b>
<b>1.3 Disclaimers.....</b>	<b>4</b>
<b>PART 2. BACKGROUND.....</b>	<b>4</b>
<b>PART 3. REQUEST FOR INFORMATION SUBMISSION FORMAT .....</b>	<b>6</b>
<b>3.1 Response Submission.....</b>	<b>7</b>
<b>3.2 Cover Letter.....</b>	<b>7</b>
<b>3.3 Conceptual Solutions and Strategies Response .....</b>	<b>7</b>

## PART 1. General Information

### 1.1 Purpose of this Request for Information

The Pennsylvania Department of Human Services (“DHS” or “Department”) Office of Administration, Bureau of Procurement and Contract Management, issues this Request for Information (“RFI”) to gather input and information on the draft Technical Submittal for a potential Request for Proposals (“RFP”) to satisfy the need for MMIS 2020 Platform services for the following two modules of the MMIS 2020 Platform project:

- Lot 1- Program Integrity Management System (“PIMS”)
- Lot 2- Third Party Liability (“TPL”)

DHS seeks to implement a new Medicaid Management Information System (“MMIS”) to replace its aging MMIS, the Provider Reimbursement and Operations Management Information System (“PROMISe™”). The new MMIS known as the MMIS 2020 Platform, will provide a modular enterprise-wide system providing automated support for the Department’s programs in both fee-for-service and managed care delivery systems, various waiver programs, the Low-Income Energy Assistance Program, and the Medical Assistance Provider Incentive Repository. The MMIS 2020 Platform will support almost three (3) million individuals who are enrolled in the Department’s programs. The system must meet all current federal and state regulations and technology standards including the Centers for Medicare & Medicaid Services (“CMS”) Conditions and Standards set forth in § 42 CFR 433.112, which includes the Medical Information Technology Architecture (“MITA”) requirements.

To achieve this vision, the Department has issued and will continue to issue RFPs to procure the new modules. The new functional modules when coupled with existing functionality will comprise the new MMIS 2020 Platform. The Department is releasing this RFI to provide an opportunity for stakeholders and the public to provide comments and to assist DHS in further refining the content and scope of a potential draft procurement for the PIM and TPL modules.

### 1.2 Request for Information Timeline

Event	Date
Release RFI	January 31, 2020
RFI Responses Due	February 27, 2020

The Department is requesting all responses to this RFI be submitted by 12:00 p.m. on the due date. Responses must be submitted electronically to the following email account with “PIMS/TPL MMIS 2020 Platform Module Technical Submittal Draft Comments” in the email subject line: [RA-PWRIFICOMMENTS@PA.GOV](mailto:RA-PWRIFICOMMENTS@PA.GOV).

While the Department does not intend to respond to questions or issue clarifications during the RFI response period, respondents may submit questions related to this RFI electronically to: [RA-PWRIFICOMMENTS@PA.GOV](mailto:RA-PWRIFICOMMENTS@PA.GOV) using “PIMS/TPL MMIS 2020 Platform Module Technical Submittal Draft Question” in the email subject line. The Department may or may not respond

based on the nature of the question. The Department will post the answers provided online at: <http://www.emarketplace.state.pa.us>.

### 1.3 Disclaimers

The Department is not liable for any costs or expenses incurred by respondents in the preparation of responses related to this RFI.

This RFI is issued for information and planning purposes only and does not constitute a solicitation for future business, an offer for procurement, or any other type of current or future procurement action, and is only intended to gather information and input. The Department will not award a contract on the basis of this RFI or otherwise pay for any of the information received.

The Department may use the information gathered through this process in the development of future procurement documents; however, the Department does not guarantee this will occur. The Department will not return responses to this RFI. Respondents will not be notified of the results of the review, nor will they be provided copies of it. If the Department issues a procurement document, no respondent will be selected, pre-qualified, or exempted based on its participation in this RFI process.

**Respondents should be aware the responses to this RFI will be public information and no claims of confidentiality will be honored. All responses are subject to a request for public records made under the Pennsylvania Right-to-Know-Law (“RTKL”), 65 P.S. § 67.101, et seq., and the Department will disclose responses if a RTKL request is made.** The Department is not requesting, and does not require, confidential, proprietary, or other competitively sensitive information to be included as part of the RFI submission. Ownership of all data, material and documentation originated, prepared, and provided to the Department during this RFI process will belong exclusively to the Department.

## PART 2. Background

### MMIS 2020 Platform Project

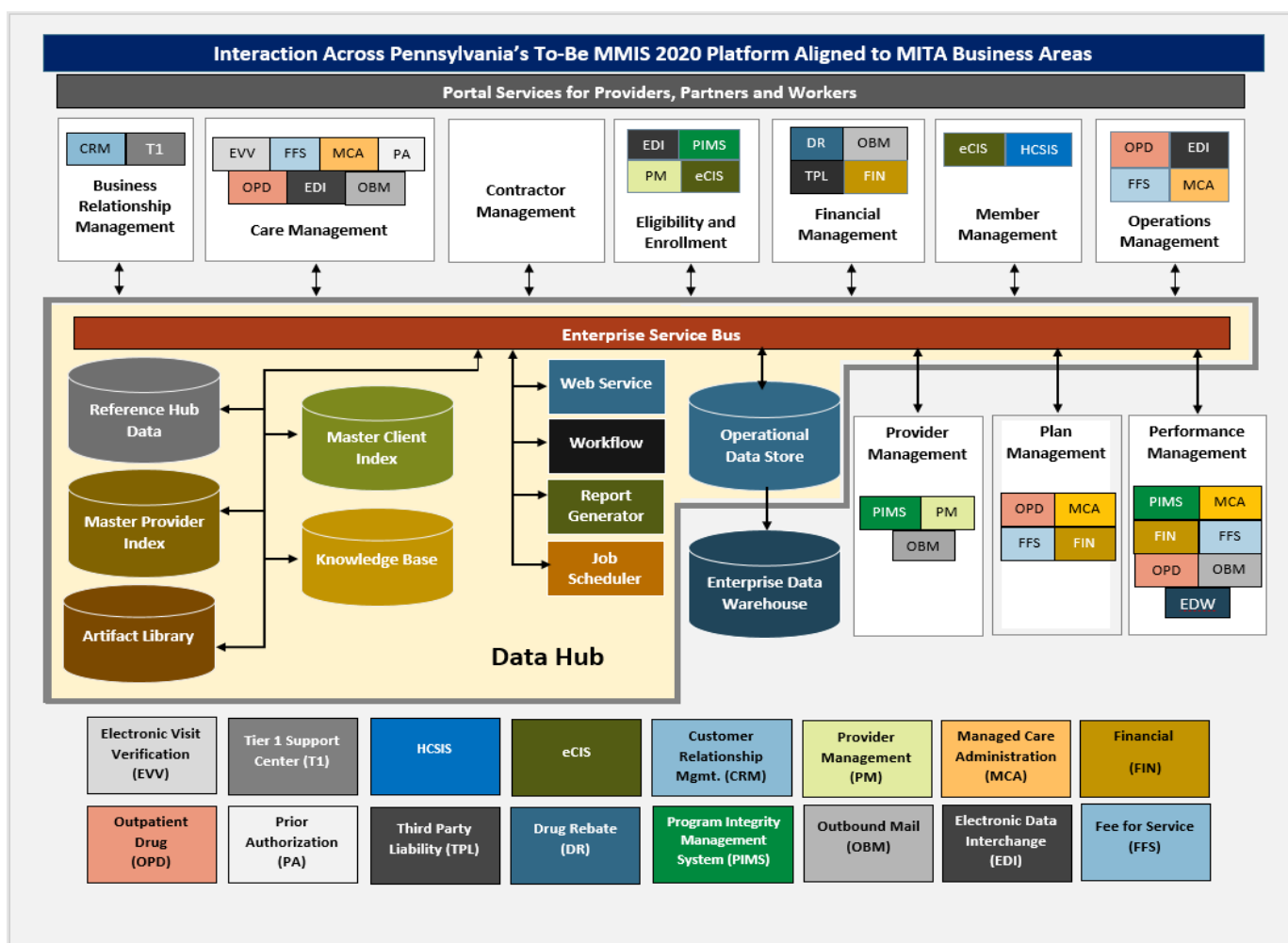
The Department has worked with CMS to develop a plan to transition from its current monolithic MMIS system to a modular solution. Using multiple contractors, each responsible for providing and supporting separate modular solutions, the MMIS 2020 Platform will conform to CMS’s goal of a loosely coupled service-oriented architecture.

Except for three modules already in place, the Department will use a phased-in and agile implementation strategy to implement the modules of the MMIS 2020 Platform, each aligned to Pennsylvania’s Medical Assistance (“MA”) program business operations structure. Selected contractors will provide modules capable of interfacing with the new MMIS as well as the PROMISe™ legacy system during the transition period from the legacy system to the modular solution. A systems integrator, referred to as the System Integrator/Data Hub contractor, will be responsible for system interoperability; each module contractor will cooperate with DHS’s Quality Assurance Program; and the entire MMIS 2020 Platform Project is subject to independent verification and validation oversight.

Pennsylvania's future MMIS will be comprised of an enterprise platform supporting modular components, products, solutions, and services. This may include commercial off-the-shelf or modified off-the-shelf products or both on premise (Commonwealth hosted) or remotely hosted, new procured components, Software as a Service, and legacy applications utilizing custom code.

The future MMIS will use an Enterprise Service Bus serving as a message broker and will support web services and Application Program Interfaces to exchange data across the MMIS. The Operational Data Store ("ODS") is the repository for transactional data and the data needing to be shared across the solution will be synchronized with the ODS. Users will use Common Portals as a central landing page to access MMIS functionality. The request on the Common Portals to access specific functionality or take action upon specific data elements will be routed to the appropriate module.

Figure 1: Pennsylvania's To-Be MMIS Structure



Program Integrity Management System ("PIMS")

DHS, Bureau of Program Integrity (BPI) ensures MA beneficiaries receive quality medical services. BPI also applies administrative sanctions, refers cases of potential fraud to the appropriate enforcement agency and evaluates medical services rendered by medical providers and managed care organization (MCO provider networks. BPI monitors MA beneficiary overuse and abuse of medical services; maintains ongoing working relationships with federal and state enforcement agencies involved in monitoring potential health care fraud and abuse and provides feedback to enhance program performance.

### **Third Party Liability (“TPL”)**

BPI Division of TPL recovers MA expenditures vital to maintaining the fiscal integrity of the MA Program. TPL touches and impacts many aspects of the MMIS 2020 Platform through the monitoring of MCOs’ encounter claims; identifying liable third-party resources; and recovering monies from health insurers, providers, estates, personal injury litigation and other settlements. TPL is a component of DHS BPI and includes a Program Management and Recovery Section. The Program Management Section maintains the integrity of TPL data on the Client Information System (“CIS”) and monitors TPL and coordination of benefits activities of the Physical Health and Behavioral Health MCOs participating in the Department’s HealthChoices and Community HealthChoices Programs.

The Recovery Section is responsible for the following activities:

1. Casualty recoveries – Recovering MA claims and associated cash assistance (“CA”) from liable third parties when beneficiaries have been injured and litigation occurs or the liable third party offers compensation for the injuries sustained;
2. Estate Recoveries – Recovering the long-term care (“LTC”) MA, home and community-based waiver expenditures or both from the probated estates of MA beneficiaries age 55 or older;
3. Special Needs Trust (“SNT”) – Recovering MA expenditures paid for trust beneficiaries whose establishment of a SNT kept them eligible for MA benefits during the duration of the trust;
4. Opening, Assigning and Scanning all new casualty, SNT and Estate Cases;
5. Preparing Statements of Claim for personal injury, SNT and Estate Recovery requests;
6. Ensuring all available health insurance resources are utilized for payment of claims for all MA beneficiaries;
7. Updating and modifying the health and Medicare resources on the CIS TPL file;
8. Processing, tracking and reporting all financial transactions performed within TPL; and
9. Verifying LTC insurance purchased by MA beneficiaries is properly utilized before MA pays.

## **PART 3. Request for Information Submission Format**

Through this RFI, the Department is soliciting information and comments regarding the draft technical submittal being considered for PIMS and TPL modules for the MMIS 2020 Platform. The draft technical submittal, which is attached as Appendix A, provides certain requirements the Department is contemplating for the PIMS and TPL MMIS 2020 Platform modules. All interested respondents are asked to respond in writing to this RFI, in accordance with the response format outlined below.

### 3.1 Response Submission

Please prepare responses simply, providing straightforward and concise language and descriptions. All responses should be produced in Arial 12-point font and submitted as a Word document, not a PDF. Please limit your response to no more than fifteen (15) pages per module, not including the cover letter or attachments. Please refrain from sending marketing materials to the Department.

### 3.2 Cover Letter

Please include a cover letter with the following information:

1. An introduction to the respondent or respondent's organization, background, and interest in one or both of the two modules.
2. General information about the respondent and respondent's organization, including: Name, Address, Point of Contact for this RFI with a telephone number and an e-mail address.

### 3.3 Conceptual Solutions and Strategies Response

The following provides a suggested structure for a response to this RFI. This structure is intended to minimize the effort required to develop and analyze submitted responses. If you wish to comment on any of the draft Technical Submittal Sections mentioned below, please note the specific provision (for example, Section I.3.C.4) and provide your comments. Please address the following:

- (a) The proposed Prior Experience provisions included in Appendix A, Section I-3.B. PIMS) and Section II.13.B TPL. Explain the reasoning underlying your comments.
- (b) The proposed Personnel provisions included in Appendix A, Section I-3.C. PIMS and Section II-13.C TPL. Explain the reasoning underlying your comments.
- (c) The Department's proposed Training provisions included in Appendix A, Section I-4 PIMS and Section II-14 TPL. Explain the reasoning underlying your comments.
- (d) The Department's proposed Work Plan provisions included in Appendix A, Section I-6 PIMS and Section II-16 TPL. Explain the reasoning underlying your comments.
- (e) The proposed Requirements identified in Appendix A, Section I-7 PIMS and Section II-17 TPL. Explain the reasoning underlying your comments.
- (f) Discuss the Department's proposed Reports and Project Control provisions included in Appendix A, Section I-8 PIMS and Section II-18 TPL. Explain the reasoning underlying your comments to these provisions.
- (g) The Department's proposed Performance Standards included in Appendix A, Section I-9 PIMS and Section II-19 TPL. Explain the reasoning underlying your comments.

- (h) Any comments on the MMIS 2020 Platform two Lots; Lot 1: PIMS and Lot 2: TPL Module Draft Technical Submittal that would help the Department improve the intended project, its implementation, and accessibility for individuals and families. Explain the reasoning underlying your comments.
  
- (i) Comments regarding an appropriate cost structure for a phased statewide implementation of Lot 1: PIMS Module and Lot 2: TPL Module for the MMIS 2020 Platform Project. DHS is particularly interested in cost structures that are not based on licensing costs per individual user.